




# KIT PRODUCT TECHNICAL DATASHEET

## KIT H30/645

Optical encoder 

Mechanic limit switch 

230V AC 



### Composition KIT H30/645

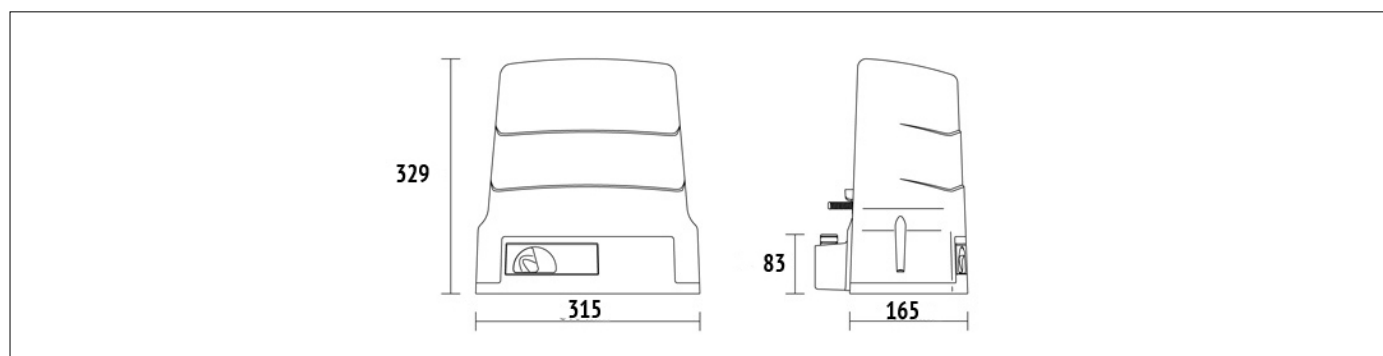
CODE	DESCRIPTION	QTY
<b>H30/643</b>	Electromechanical motor 230V AC, irreversible, ideal for sliding gates up to 600 kg with built-in control unit H70 and optical encoder. Complete with fixing plate with tie rods and mechanical limit switch.	1
<b>H93/RX22A/I</b>	Plug-in receiver fixe code 2 channels 433,92 MHz (500 storable codes) for control units series H70, B70, EDGE, CTRL and F70.	1
<b>T80/TX2</b>	Dual code transmitter (modality fixed code or rolling code), 433,92 MHz, 2 channels, with copy function.	2
<b>R90/F2ES</b>	Pair of external photocells synchronized.	1
<b>FIFTHY/230</b>	LED flashing light 230V - 115V with integrated antenna.	1
<b>R99/C/001</b>	Signboard "Automatic Opening".	1

### PRODUCT TECHNICAL SPECIFICATIONS

Max gate weight	600 kg
Power line supply	230V AC - 50Hz
Motor power supply	230V AC
Power rating	240W
Frequency of use	50%
Thrust	300N
Operating temperature	-20+55°C
Protection level	IP44
Reductor Type	Irreversible
Manoeuvre speed	9.5 m/min (0.16 m/s)
Motor thermal protection	150°C

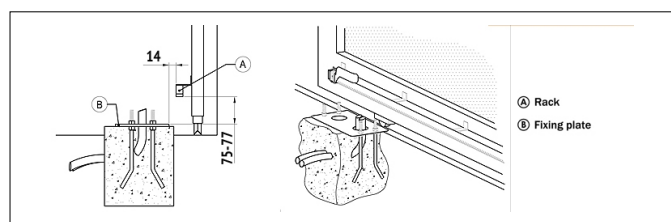
Incorporated condenser	12,5 µF
Limit switch	Mechanical
Onboard control unit	H70/104AC
Encoder	Optical
Type exit gear	Z15/mod 4
Maximum dimension product in mm (L x W x H)	315 x 165,8 x 329
Product weight packed (Kg)	12,1
Number items per pallet/box	44

# PRODUCT DIMENSIONS AND PREPARING FOR INSTALLATION

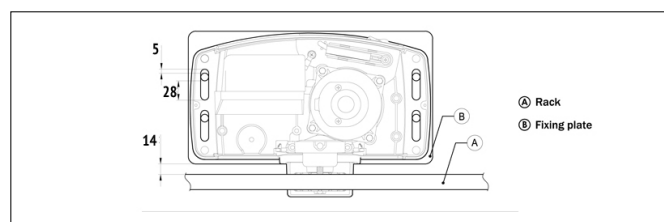


DIMENSIONS

## PRODUCT PREPARING FOR INSTALLATION



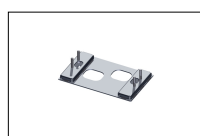
PREDISPOSITION FOR STANDARD INSTALLATION



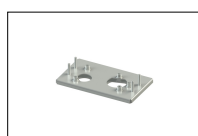
## PRODUCT ACCESSORIES



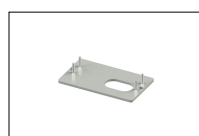
**KT214/SA**  
Adapter plate complete with tie rods and screws for series H30.



**KT214/SC**  
Adapter plate complete with tie rods and screws for series H30.



**KT214/SF**  
Adapter plate complete with tie rods and screws for series H30.



**KT214/SN**  
Adapter plate complete with tie rods and screws for series H30.



**KT221**  
Raised fixing plate for H30 series (+3,5 cm).



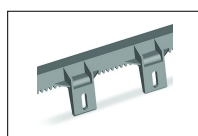
**GA550**  
Galvanised steel rack 22x22x1000, module 4.



**GA551**  
Galvanised steel rack 30x12x1000, module 4, complete with spacers and screws.



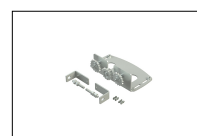
**GA554**  
Pocket of 6 spacers (2,5 cm) with screws.



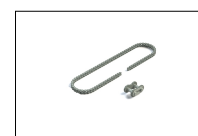
**GA553**  
Nylon rack module 4 with 6 connectors L.1000.



**GA557**  
Roger Technology nylon rack, module 4 to 6 connectors, L.1000.



**LT330**  
Kit for chain drive for BH30 - H30 series.



**LT334**  
1/2" X 5/16" 5 meter chain piece for LT330 complete with joint.



**LT335**  
1/2" X 5/16" joint for LT334 chain section.