

PRODUCT TECHNICAL DATASHEET

BG30/2204

Brushless 

Intensive use 

Digital Encoder 

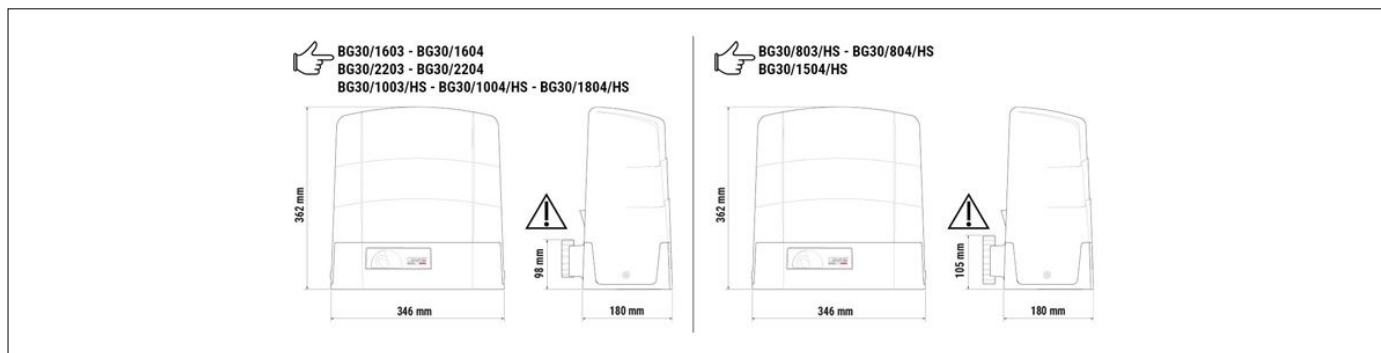
Magnetic limit switch 



CODE	DESCRIPTION	PCS/PALLET
BG30/2204	Electromechanical motor BRUSHLESS, low voltage, super intensive use, with native encoder on-board, irreversible, ideal for sliding gates up to 2200 kg with built-in digital controller B70 series. Complete with fixing plate with tie rods and magnetic limit switch.	30

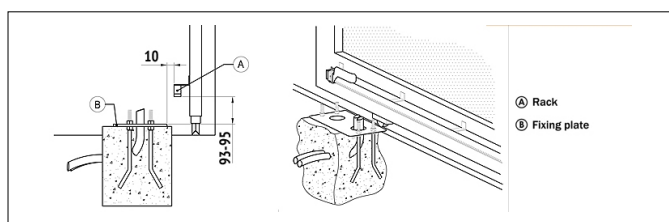
PRODUCT TECHNICAL SPECIFICATIONS	
Max gate weight	2200 kg
Power line supply	230V AC - 50Hz
Motor power supply	36V
Power rating	470W
Frequency of use	Intensive use
Thrust	50 - 1700N
Operating temperature	-20+55°C
Protection level	IP44
Reductor Type	Irreversible
Manoeuvre speed	12 m/min (0.16 m/s)
Limit switch	Magnetic
Onboard control unit	B70/1DCHP
Encoder	Digital native encoder + magnetic digital SENSORED, 4096 PPR
Batteries recovery	Optional 2 external battery 12V 4,5AH
Type exit gear	Z17/mod 4
Operating cycles per day (opening/closing - 24 hours no stop)	1000
Maximum dimension product in mm (L x W x H)	350 x 220 x 380
Product weight packed (Kg)	18,6

PRODUCT DIMENSIONS AND PREPARING FOR INSTALLATION

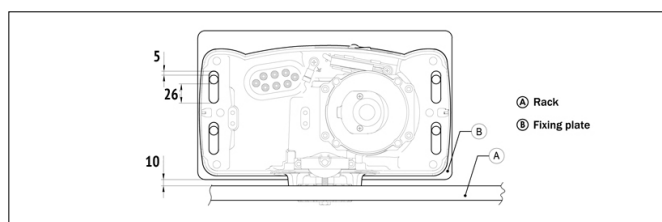


DIMENSIONS

PRODUCT PREPARING FOR INSTALLATION



PREDISPOSITION FOR STANDARD INSTALLATION



PREDISPOSITION FOR STANDARD INSTALLATION

PRODUCT ACCESSORIES



B71/BCHP/EXT
Kit for emergency batteries charger for Brushless digital controller B70/1DCHP - B70/1THP - EDGE1/BOX 36V DC with plug-in card, with 2 recovery batteries 12V DC, 4.5 Ah. Box case included.



B71/BCHP/BOX
Kit for emergency batteries charger for Brushless digital controller B70/1DCHP - B70/1THP - EDGE1/BOX 36V DC. Box case included, without recovery batteries.



KT222
Raised fixing plate for G30 series (+3,5 cm).



HT421
External box without batteries, for battery BT12V45 (4,5 Ah), BT12V70 (7 Ah) and BT12V120 (12 Ah), up to a maximum of 3 batteries.



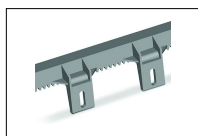
GA550
Galvanised steel rack 22x22x1000, module 4.



GA551
Galvanised steel rack 30x12x1000, module 4, complete with spacers and screws.



GA554
Pocket of 6 spacers (2,5 cm) with screws.



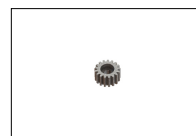
GA553
Nylon rack module 4 with 6 connectors L.1000.



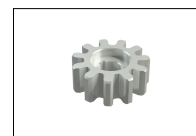
GA557
Roger Technology nylon rack, module 4 to 6 connectors, L.1000.



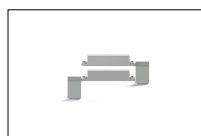
GA558
Roger Technology nylon rack module 6 to 6 connectors, L.1000.



LT328
Pinion Z17 mod. 4 increased thickness H.38 for series BG30 - G30 - TW110 - R30 - E30 (except BG30/804/HS - BG30/1504/HS - TW110/1000/HS).



LT331
Pinion Z11 mod. 6, only for series BG30 - G30 - TW110 (except BG30/804/HS - BG30/1504/HS - TW110/1000/HS).



MC783
Pair of increased magnets for magnetic limit switch, only for GA558.