

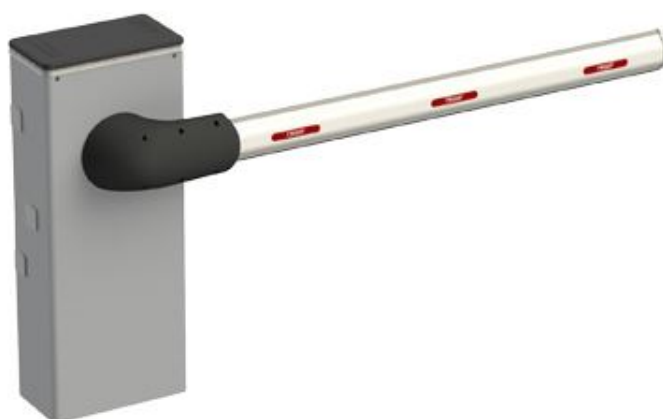
# PRODUCT TECHNICAL DATASHEET

## BI/008

Brushless 

Intensive use 

Digital Encoder 

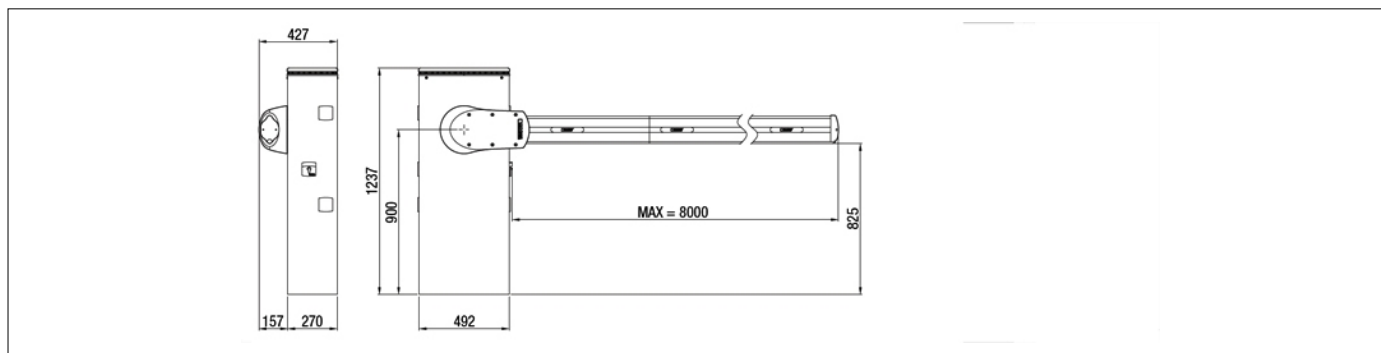


CODE	DESCRIPTION	PCS/PALLET
BI/008	Barrier BRUSHLESS 36V DC for booms up to 8 m, with control unit and absolute encoder, irreversible, complete with xing plate with tie rods, boom fixing angles and flashing white LED light on header.	4

PRODUCT TECHNICAL SPECIFICATIONS	
Barriers	Up to 8 mt long
Power line supply	230V AC - 50Hz
Motor power supply	36V DC
Power rating	300W
Frequency of use	Super intensive use
Torque	10 - 400 N m
Operating temperature	- 20 + 55 C°
Protection level	IP54
Reductor Type	Irreversible
Opening time	9 ÷ 29 (sec)
Onboard control unit	CTRL
Encoder	Digital native encoder + magnetic digital SENSORED, 4096 PPR
Accessories power supply	24V DC
Colour	Cabinet: painted RAL9006 arabesque grey - Head: black arabesque silver painted - Boom support: black arabesque silver painted - Boom: painted RAL9010 matt
Release system	European Key cylinder
Batteries recovery	Available (optional)

BUS synchronization Master/Slave	Yes
Operating cycles per day (opening/closing - 24 hours no stop)	2500
Maximum dimension product in mm (L x W x H)	500 x 270 x 1237
Product weight packed (Kg)	104,7
Number items per pallet/box	4

# PRODUCT DIMENSIONS AND PREPARING FOR INSTALLATION

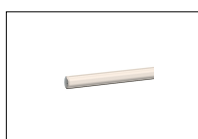


DIMENSIONS

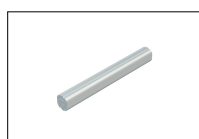
## PRODUCT ACCESSORIES



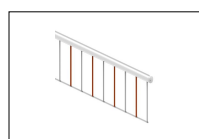
**SP/85/AS/02**  
Assembly 2 spring diameter 85 mm for barriers.



**BA/128/4**  
White painted aluminum boom, 4 meters long, with LED cover profile and impact resisting rubber profile.



**JNT/BA/128**  
Internal connection joint, anodised aluminium, with fixing screws for BA/128 booms (2 pieces per installation required).



**BARK/02**  
Painted aluminum skirting, with stainless steel screws mounted on bronze bushings. Single module length 2 meters.



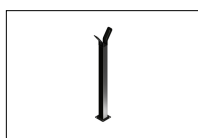
**ALED/8C**  
8-metre LED strip with connection cable for barrier boom (red colour).



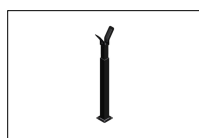
**ALED/8C/RGB**  
8-metre multicoloured RGB LED (red, green + other colours) strip with connection cable for barrier boom.



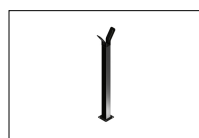
**BI/BLED/8/RGB**  
Multicoloured RGB LED strip (red, green + other colours) with connection cable for BI/008 barrier header.



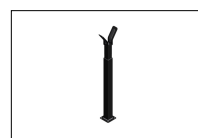
**BAFS/01**  
Fixed support with rubber, not adjustable, for booms.



**BAFS/02**  
Fixed support with rubber, adjustable telescoping, for booms.



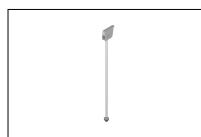
**BAFS/03**  
Fixed support with rubber, not adjustable, with predisposition for bolt, for booms.



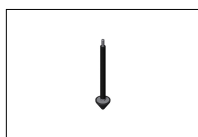
**BAFS/04**  
Fixed support with rubber, adjustable telescoping, with predisposition for bolt, for booms.



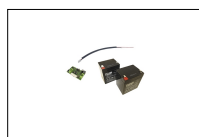
**BAFS/05**  
Adjustable fixed support with vandal-proof magnetic suction cup, complete with B72/DGS demagnetizer card, for booms.



**BAMS/01**  
Mobile support for bars.



**BAMS/01/EXT**  
Extension 20 cm for mobile support BAMS/01.



**BI/BAT/KIT**  
Kit for emergency batteries charger for Brushless digital controller CTRL 36V DC with plug-in card, with 2 recovery batteries 12V DC, 4.5 Ah. Kit for BIONIK barrier.



**BI/BCHP**  
Plug-in card, batteries charger, for Brushless digital controller CTRL 36V DC, without recovery batteries, for BIONIK barrier.



**BT12V45**  
Battery 12V 4.5 Ah (1 pc.).



**CRA/BAR**  
Column for photocells G90/F2ES - G90/F4ES for spaced installation on a barrier cabinet (+23 cm).



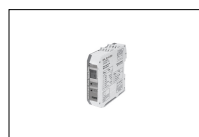
**CRA/BAR/M90**  
Column for photocells M90/F2ESO - M90/F4ESO for spaced installation on a barrier cabinet (+23 cm).



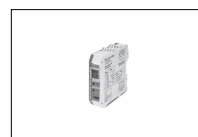
**B73/EXP**  
Signal status board, 2 output for CTRL - CTRL/P.



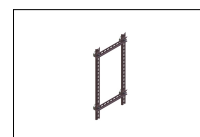
**B73/LTM**  
RGB boom light and traffic light control device for CTRL.



**DLD1/24**  
Loop detector for 1 loop, 2 output, 24V AC/DC.



**DLD2/24**  
Loop detector for 2 loops, 2 outputs + output alarm, 24V AC/DC.



**KT239**  
Kit DIN rail with magnetic supports.



**KT242**  
Kit for cable passage with magnetic support for barriers.



**R99/BASB20**  
Pack of 20 reflective adhesive stickers for boom barrier.



**R99/BASB40**  
Pack of 40 stickers for barrier.